

IP Based Fingerprint Identification (Fingerprint/RFID/PIN) Time & Attendance / Access Controller



- Standalone Operation without PC / Server Connection
- 13.56MHz Smart Card (MIFARE) Format
- Able to Scan Fingerprint from Any Angle
- Fake Fingerprint Detection : Auto on Function & LIVE Fingerprint Detection
- Communication : TCP/IP, RS485, RS422, RS232
- User / Event Buffers Up to 50,000 Users / Up to 50,000 Events



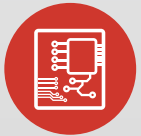
FINGER007SRT FINGER007SR



Fingerprint
Recognition



RFID Reader
& Card



Access
Controller

IDTECK
Your Security Partner
SINCE 1989

IP Based Fingerprint Identification Time & Attendance / Access Controller **FINGER007SRT / FINGER007SR**



Key Features

- Professional Time & Attendance / Access Controller
- 13.56MHz Smart Card (MIFARE) Foramt *
- Operation Mode : RF Card(PIN/Fingerprint), RF Card(PIN)+Password/Fingerprint, RF Card(PIN)+Password+Fingerprint
- Standalone Device with Internally Embedded Controller
- Standalone Operation without PC/Server Connection
- Fingerprint Identification without using any cards or keypads
- 4 Function Keys for Time & Attendance Applications
- Communication
 - FINGER007SRT : TCP/IP, RS422,RS485,RS232
 - FINGER007SR : RS422,RS485,RS232
- Fingerprint Users : Up to 5000 Users
- User / Event Buffers Up to 50,000 Users / Up to 50,000 Events
- Able to Scan Fingerprint from Any Angle
- Fake Fingerprint Detection : Auto on Function & LIVE Fingerprint Detection
- Automatic System Reset via Self-Diagnosis (Watchdog Function)
- Anti-Passback Function
- Duress Mode
- Alerts when Door Opening Time Exceeds and Forced Door Open
- Time Schedule Setting
- 3-State Supervised Input (On/Off/Cut)
- Designed to Withstand ESD (Electro Static Discharge) Shock
- Output Format : FINGER007 Series may function as a Standalone Controller as well as a Reader
 - FINGER007SRT / FINGER007SR : 34 Bit Wiegand
- Compatible Software : IDTECK STANDARD Series, TIME PRO, TIME BASIC

※ 13.56MHz Smart Card (MIFARE) : ISO14443 Type A, B, MIFARE Classic, MIFARE Plus, MIFARE Desfire, MIFARE Ultra light

IP Based Fingerprint Identification Time & Attendance / Access Controller **FINGER007SRT / FINGER007SR**



Specifications

Model	FINGER007SRT		FINGER007SR
CPU	32 Bit ARM9 and Dual 8 Bit Microprocessor		
Memory	Program	128K Byte Flash Memory	
	Data	1M Byte Flash Memory	
Fingerprint User	Up to 5,000 Users		
ID User	Up to 50,000 Users (Including Fingerprint Registration)		
Event Buffer	Up to 50,000 Events		
Radio Frequency (RF)	13.56MHz Smart Card (MIFARE) / ISO14443 Type A, B, MIFARE Classic, MIFARE Plus, MIFARE Desfire, MIFARE Ultra light		
Read Range (Compatible Card Type)	ISC80: Up to 10cm / IHC80: Up to 5cm		
Reading Time (Card)	30ms		
Verification Time	Less than 1 sec.		
Identification Time	Less than 2 sec.		
Fake Fingerprint Detection	Auto on Function & LIVE Fingerprint Detection		
Power / Current	DC 12V / Max. 300mA		
External Reader Port	1 EA : 34bit Wiegand (for Anti-Passback) 4/8bit Burst for PIN		
Communication	TCP/IP, RS485, RS422, RS232 (Max. 32ch)	RS485, RS422, RS232 (Max. 32ch)	
Communication Speed	TCP/IP	10/100 Mbps	
	Serial	9,600bps (Default) / 19,200bps / 38,400bps / 57,600bps / 115,200bps (Selectable)	
Input Port	4 EA: Exit Button, Door Sensor, Aux#1, Aux#2		
Output Port	2 EA: 2 FORM-C Relay Output (COM, NO, NC) / DC 12V~18V, Rating Max. 2A		
	2 EA: TTL Output / DC5V, Rating Max. 20mA		
	Can be used in 34 Bit Wiegand, using the 2TTL Outputs		
Tamper Switch	2 EA		
LED Indicator / Beeper	7 LED Indicators / Piezo Buzzer		
LCD	Character LCD (2 Lines x 16 Char) 65.6 x 13.8 mm (2.62"x 0.55") Screen		
Keypad	16 Numeric Keypad with Back Lightings / Membrane		
Operating Temperature	Fingerprint Module: -15°C ~ +40°C (5°F ~ 104°F)		
	LCD: 0°C ~ +50°C (+32°F ~ +122°F)		
	Controller: -15°C ~ +70°C (+5°F ~ +158°F)		
	RF Reader: -35°C ~ +65°C (-31°F ~ +149°F)		
Operating Humidity	10% ~ 90% Relative Humidity, Non - Condensing		
Color / Material	Dark Pearl Gary / Polycarbonate		
Dimension (W x H x T) / Weight	161.5mm x 134mm x 48.5mm / 547g (1.21lbs)		
Certification	FCC, CE, KCC, RoHs		

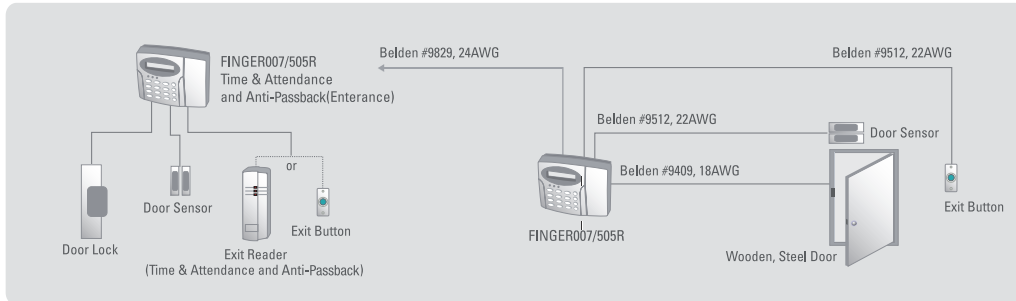
Fingerprint Module Specification

Sensing Type	High Quality Optical Sensing	FRR	0.1%
Sensing Area	13.2 x 15.2 mm	FAR	0.001%
Image Resolution	500 DPI		
Image Size	248 * 292 pixels		

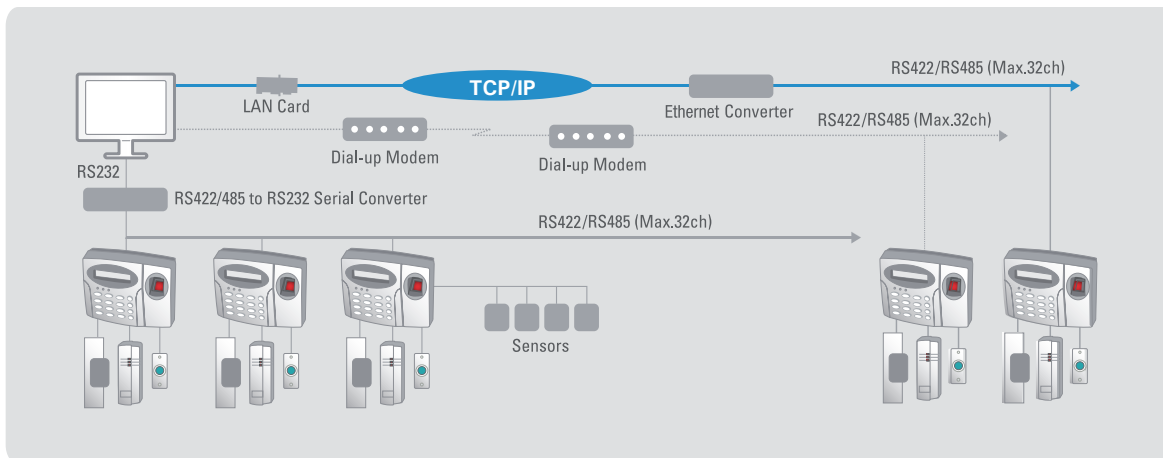
IP Based Fingerprint Identification Time & Attendance / Access Controller **FINGER007SRT / FINGER007SR**



Standalone Configuration



Network Configuration



IDTECK CO., Ltd.

3F, Ace Techno Tower Bldg, 468, Gangseo-Ro, Gangseo-gu, Seoul, 07573, Korea
Tel. +82-2-2659-0055 | Fax: +82-2-2659-0086
Email: saleswebk@idteck.com | Website: www.idteck.com

IDTECK Global Inc.

1555W. Redondo Beach Blvd #100 Gardena, CA 90247, USA
Tel. +1-310-819-8115
Email: sales@idteckglobal.com | Website: www.idteckglobal.com

The specifications contained in this catalog are subject to change without notice at any time. Copyright © IDTECK Co., Ltd.

IDTECK
Your Security Partner
SINCE 1989