

IP Based RFID Identification Time & Attendance / Access Controller



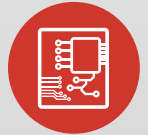
- Able to check stored event list through the LCD display
- 12 Function Keys for Various Professional Time & Attendance Applications (Shift Management, Overtime, Breaktime, etc.)
- User's Name and Function Key Definition Display
- Communication : TCP/IP, RS485, RS232
- User / Event Buffers Up to 20,000 Users / Up to 20,000 Events



LX505 IP-LX505 LX505SR



RFID Reader
& Card



Access
Controller

IDTECK
Your Security Partner
SINCE 1989

IP Based RFID Identification Time & Attendance / Access Controller LX505 / IP-LX505 / LX505SR



Key Features

- Professional Time & Attendance / Access Controller
- Standalone Device with Internally Embedded Controller
- Standalone Operation without PC/Server Connection
- Graphic LCD Applied for Multi-Language Display and Voice Guide in Various Languages
- Able to check stored event list through the LCD display
- 12 Function Keys for Various Professional Time & Attendance Applications
(Shift Management, Overtime, Breaktime, etc.)
- User's Name and Function Key Definition Display
- Communication : TCP/IP, RS485, RS232
- User / Event Buffers Up to 20,000 Users / Up to 20,000 Events
- Automatic System Reset via Self-Diagnosis (Watchdog Function)
- Anti-Passback Function
- Duress Mode
- 2 Men-Operation Function
- Arm/Disarm Function
- Alerts when Door Opening Time Exceeds and Forced Door Open
- Serial Printer Port for Issuing Event Ticket (Optional)
- Advanced Security Time Schedule Configuration
- Configurable Setting per ID
(Time Schedule, Card Usage (Authentication Mode), Expiration Date, Accessible Reader, Door Opening Time, etc.)
- Allows Registration of 10 Administrators using Fingerprints
- 3-State Supervised Input (On/Off/Cut)
- Designed to Withstand ESD (Electro Static Discharge) Shock
- Output Format : LX505 Series may function as a Standalone Controller as well as a Reader
 - LX505 / IP-LX505 : 26 Bit Wiegand
 - LX505SR : 34 Bit Wiegand
- Operation Mode : RF Card(PIN), RF Card(PIN)+Password
- Compatible Software : IDTECK STANDARD Series, TIME PRO, TIME BASIC, IDTECK ENTERPRISE TA Series
- LX505: 125KHz (IDTECK Credential Format/IDC Type)
- IP-LX505: 125KHz (ASK [EM]Format)
- LX505SR: 13.56MHz (ISO14443 Type A, B, MIFARE Classic, MIFARE Plus, MIFARE Desfire, MIFARE Ultra light)
Identifies UID/CSN Read only 4 Byte (Optional 7 Byte)

IP Based RFID Identification Time & Attendance / Access Controller LX505 / IP-LX505 / LX505SR



Specifications

Model		LX505	IP-LX505	LX505SR
CPU		Dual 8bit and 16bit Microprocessor		
Memory	Program	256KByte ROM		
	Data	512KByte Flash Memory		
ID User		Up to 20,000 Users		
Event Buffer		Up to 20,000 Events		
Radio Frequency (RF)		125KHz IDTECK Secure & Credential Fomat	125KHz EM(ASK)	13.56MHz
Read Range (Compatible Card Type)		IDC80/IDC170: Up to 4 Inch (10cm)	IPC80/IPC170: Up to 4 Inch (10cm)	ISC80: Up to 10cm / IHC80: Up to 5cm
Reading Time (Card)		30ms		
Power / Current		DC 12V / Max. 550mA		
External Reader Port		1 EA : 26bit Wiegand (for Anti-Passback) 4/8bit Burst for PIN		1 EA : 34bit Wiegand (for Anti-Passback) 4/8bit Burst for PIN
Communication		TCP/IP, RS232, RS485 (Max. 32ch)		
Communication Speed	TCP/IP	10/100 Mbps		
	Serial	57,600 bps (Default) / 9,600 bps / 19,200 bps / 38,400 bps (Selectable)		
Input Port		4 EA: Exit Button, Door Sensor, AUX#1, AUX#2		
Output Port		2 EA: 2 FORM-C Relay Output (COM, NO, NC) / DC 12V~18V, Rating Max. 2A		
		2 EA: TTL Output / DC5V, Rating Max. 20mA		
		Can be used in 26 Bit Wiegand, using the 2TTL Outputs	Can be used in 34 Bit Wiegand, using the 2TTL Outputs	
Tamper Switch		2 EA		
Real Time Clock		Accurate time display with continuous time synchronization with Application S/W(PC)		
LED Indicator		3 Array LED Indicators		
LCD		Graphic LCD (128 x 64 dots) 72.5 x 39.5mm Screen		
Language & Voice	WEST	English(Default), Italian, French, Russian, Czech		
	EAST	English(Default), Chinese, Korean		
	ARAB	English(Default), Arabic		
Buzzer		Piezo Buzzer		
Keypad		24 Key Numeric Keypad with Back Lighting (12 Function Key included)		
Operating Temperature		LCD: 0°C ~ +50°C (+32°F ~ +122°F)		
		Controller: -15°C ~ +70°C (+5°F ~ +158°F)		
		RF Reader: -35°C ~ +65°C (-31°F ~ +149°F)		
Operating Humidity		10% ~ 90% Relative Humidity, Non - Condensing		
Color / Material		Black / Polycarbonate		
Dimension (W x H x T) / Weight		192 x 160 x 45mm (7.6" x 6.3" x 1.8") / 750g(1.7 lbs)		
Certification		FCC, CE, KCC, RoHs		

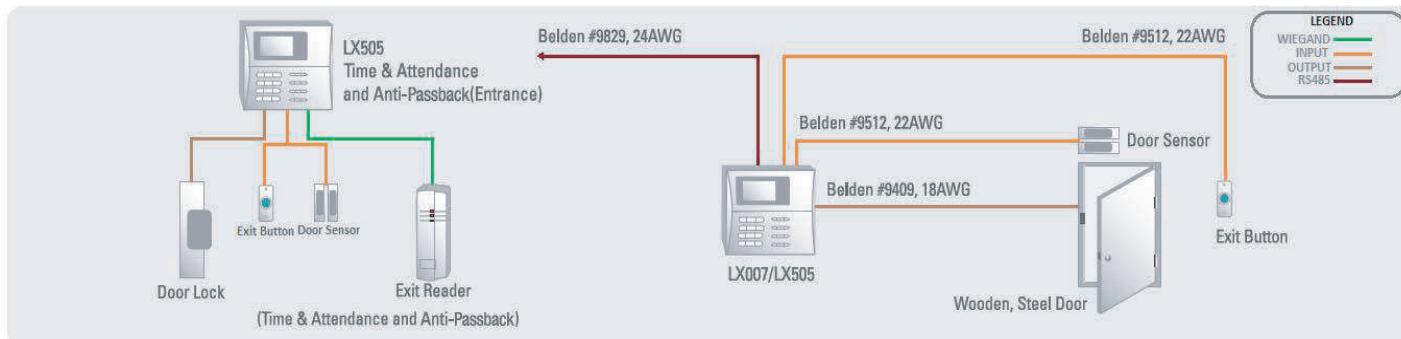
Time Schedule

Time Code	10	Holiday Code	10
Time Interval	5	Holiday	100

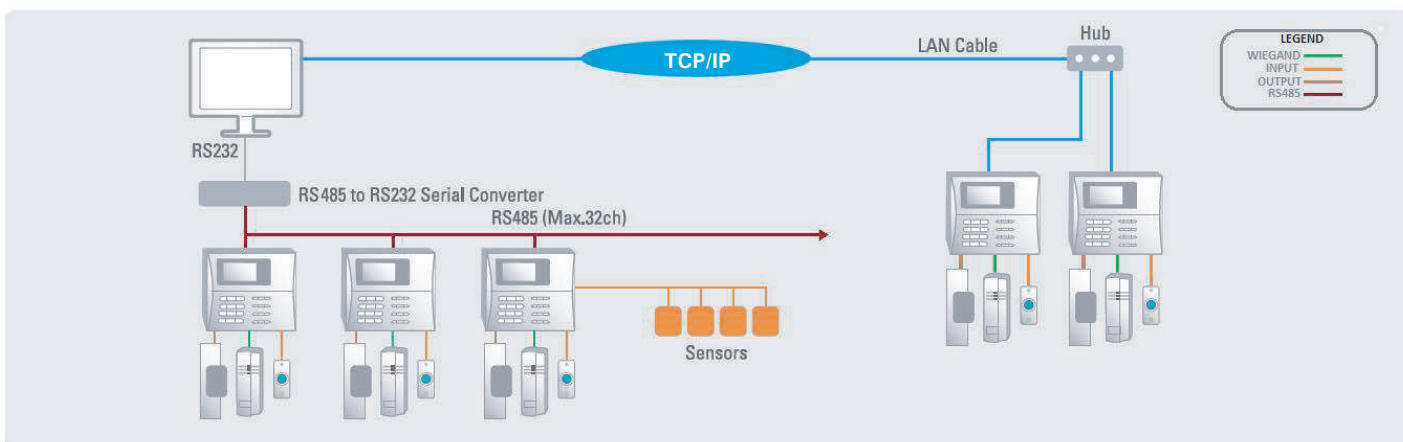
IP Based RFID Identification Time & Attendance / Access Controller LX505 / IP-LX505 / LX505SR



Standalone Operation Configuration



Network Operation Configuration



IDTECK CO., Ltd.

3F, Ace Techno Tower Bldg, 468, Gangseo-Ro, Gangseo-gu, Seoul, 07573, Korea
Tel. +82-2-2659-0055 | Fax: +82-2-2659-0086
Email: local@idteck.com | overseas@idteck.com | Website: www.idteck.com

IDTECK Global Inc.

1555 Redondo Beach Blvd #100 Gardena, CA 90247
Tel. +1-310-819-8115
Email: sales@idteckglobal.com | Website: www.idteckglobal.com